

## AI Technologies and Solutions



To analyze financial and sustainability corporate behaviors with transparency and trust

Fujitsu leverages various business-specific AI technologies, including generative AI, action recognition AI, and demand forecasting, to support the creation of new services and businesses that improve daily convenience and enhance people's abilities and knowledge.

A platform that provides Advanced AI tools for financial and sustainability analysis, including simplification of CSRD reporting for companies, while measuring the impact of sustainability decisions on business growth.

### Enhance corporate financial and ESG analysis through transparent and reliable analysis of corporate behavior

Facing a landscape where financial crime is becoming increasingly complex and regulations more stringent, the market demands solutions that not only keep pace but stay ahead.



**Increasing  
complexity of fraud**



**Regulatory  
Pressure**



**Decrease in  
operational efficiency**

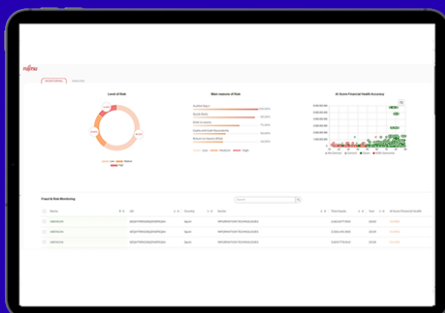


**Loss from misconduct**

This solution provides transparent and reliable analysis of corporate financial and sustainability behavior with two features, Sentinel AI and ESG Auto-Tagger, and provides clear and detailed explanations of AI decisions.

#### Sentinel AI

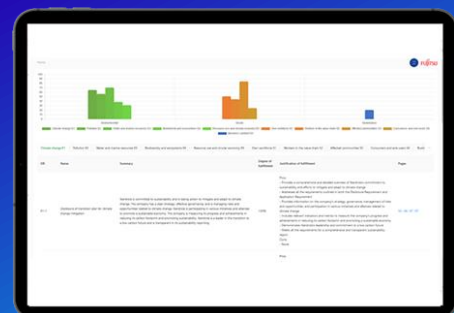
It is an advanced feature that transparently and reliably analyzes a company's financial and sustainability actions and clearly and in detail explains the results of AI decisions.



#### ESG Auto-Tagger

It can accurately auto-tag ESG data using Fujitsu's highly generated AI.

In accordance with ESRS (\*1), ISSB (\*2) and GRI (\*3) standards, we identify critical information on environmental impact, social responsibility and governance to ensure reliable and comprehensive data analysis.



( \*1 ) European Sustainability Reporting Standards

( \*2 ) International Sustainability Standards Board

( \*3 ) Global Reporting Initiative

Features

Sentinel AI

Financial Health Prediction Model  
Quick way to see where to best invest



Advance Explainability model  
Building Responsible AI for the future



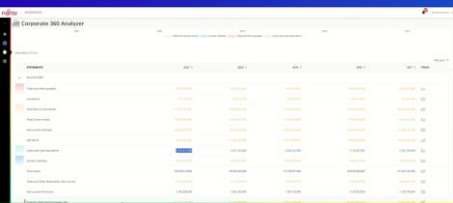
Advance Scoring  
Transparency Score



Auditable AI  
No more black box



Anomaly detection  
Alert system that shows financial health impact, the market average and over the years

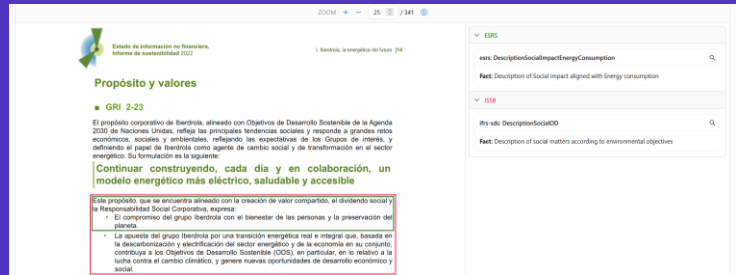


Advance Analytics Capabilities  
Analyze key metrics over the years



ESG Auto-Tagger

Auto-tagging



ESG Co-pilot assistants



Dashboard



## Key Benefits



### Focus on explainability

Ensure transparency and comprehensibility of decision-making processes using explainable AI (XAI).



### Responding to international regulations

Compliance with regulations such as ESRS (Europe) and ISSB (International).



### Differentiated ESG Analysis

Improve transparency and accountability with innovative features such as automated ESG reporting, which has unique elements that give it an edge in ESG analysis.



### Integrates financial analysis and ESG

Leverage XBRL technology to seamlessly integrate financial analysis and ESG considerations.

## Use Case

### Company scoring (Rating agency)



Challenge	Solution
<ul style="list-style-type: none"><li>● The leading Data aggregators on financial and business information in Spain and Europe availables different data sources: financial information of companies in the census (annual reports), publications in BORME, auditor's reports, lawsuits and defaults...</li><li>● The data aggregators needs to generate a "reliable financial health score" based on advanced AI technologies which can be self-explainable</li></ul>	<ul style="list-style-type: none"><li>● Develop eXplainability technologies (XAI) for a cutting-edge financial health score, so that we could provide transparent explanations of AI predictions and enhance its interpretability, ensuring that recommendations and predictions are understandable.</li></ul>

### Results

- We promote the use of a transparent and reliable AI as a supervision tool that facilitates the identification of key features of business health, such as corporate strength and risky financial practices, shedding light on possible problems in the solvency, profitability or liquidity of companies.
- All this through easily interpretable results from an eXplainable Artificial Intelligence (XAI), which can provide clear explanations about the financial health score and enable the development of new lead recommendations to an enhancement of business health, providing detailed explanations of why specific actions are suggested.

### Contact

Fujitsu Limited  
Contact Fujitsu  
[Contact Form](#)

