

AI Technologies and Solutions

Supporting the use of data/AI in business tasks through conversational interfaces

Fujitsu leverages various business-specific AI technologies, including generative AI, action recognition AI, and demand forecasting, to support the creation of new services and businesses that improve daily convenience and enhance people's abilities and knowledge.

Generative AI with Hallucination detection is available in a secure enterprise environment in two forms: a chat app and an API. Fujitsu leverages the Large Language Model (LLM) and Search Extension Generation (RAG) in a wide range of use cases. In the enterprise industry that deals with large and secure data, Fujitsu will help the customer transform their business through a business-specific LLM developed with Cohere Inc.

Key Benefits

Fujitsu provides a comprehensive suite of tools for generative AI, making it suitable for rapid prototyping (PoC) and short-term deployments. The customer can customize APIs and Processing workflows such as prompts, data conversion and reading. It is flexible for a wide range of use cases..



Cutting-Edge Technology

Our platform supports multimodal AI, integrating analytical AI capabilities, specialized large language models (LLMs), and other state-of-the-art technologies.



Available in two forms: chat app and API

It is available in two forms: a chat application that allows interaction with generative AI, and an API that is easy to incorporate into business operations.



Customizable Workflows and APIs

Users can easily customize their generative AI experience through flexible Flow(Process flow for AI to sequence tasks) settings and APIs.

Features



1 Interactive interface

- ChatGPT equivalent interactive interface
- Chat history and multiple chats



2 RAG (ability to generate responses based on reference material)

- Generates an answer based on the customer's data referenced
- Assist in assessing whether captured data has been referenced for purpose



3 Defined/Custom API

- The general Flow (Translation, summary, design specification review, etc.) is provided as an API template
- Combining APIs, multi-step processing flow can be configured for each use case



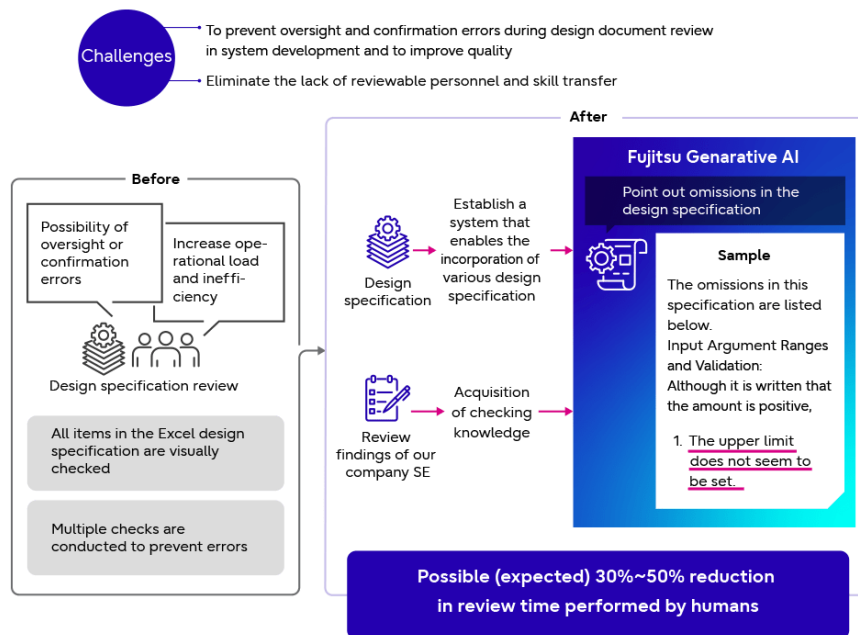
4 Hallucination detection function

- [Fujitsu proprietary technology] Hallucination countermeasure function that scores the degree of hallucination in output answers

Use Case

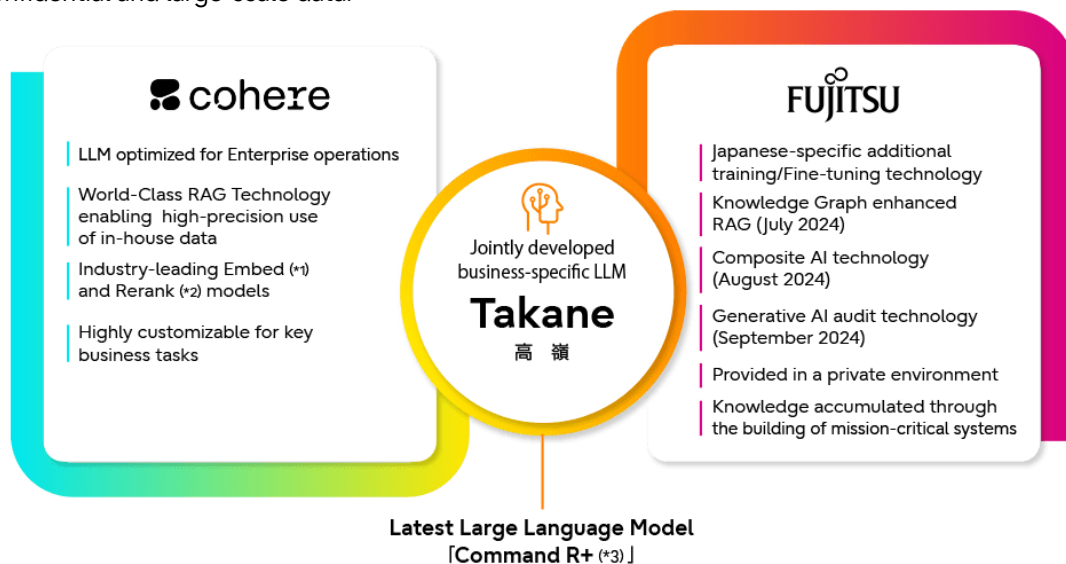
Design specification review

A system is implemented to automate the review of system design specification, identifying potential omissions through strategically placed checkpoints.



Business-specific LLM for Enterprise

Fujitsu provides "Takane," a product jointly developed with Cohere Inc. Takane is an LLM with enhanced Japanese language processing capabilities that supports the creation and use of customer-specific LLMs with RAG/fine-tuning for customers with highly confidential and large-scale data.



(*1) Machine learning models that convert text and other data into numeric vectors

(*2) Models for improving the accuracy of search systems

(*3) Large-scale language model developed by Cohere Inc.

Contact

Fujitsu Limited
Contact Fujitsu

[Contact Form](#)



Fujitsu Data Intelligence PaaS

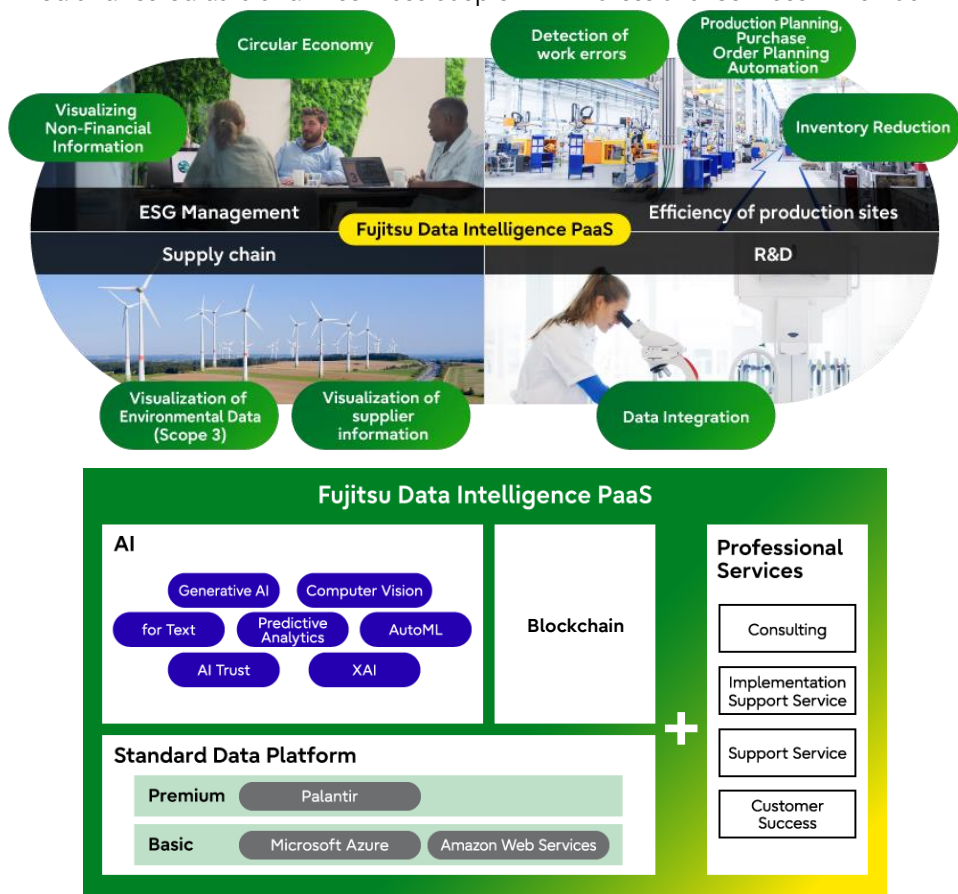
All-in-one platform unleashing business intelligence potential.

Fujitsu's approach to realizing AI for business

There are a plethora of AI applications that have proven to solve business and society challenges, turning them into opportunities to drive a more sustainable future. And with the advent of generative AI, there was exponential accessibility to boost organization's productivity.

Fujitsu Data Intelligence PaaS (DI PaaS) helps organizations realize AI today to enable faster decision-making. It can be difficult to derive meaningful insights from a vast amounts of data scattered across organizations, but not with DI PaaS.

Our combination of tried and tested data and AI services couple with Professional Services will unlock more possibilities with DI PaaS.



Data Platform

All-in one data platform solution based Palantir or Microsoft Azure / Amazon Web Services.

With Palantir can be used not only to integrate, store, and visualize data, but also to create applications used in business operations. And we also provide a platform for analyzing features and data in one package It can quickly provide a combination of templated AI and data analytics functions.

Blockchain

We provide platform empowers businesses to navigate the complexities of traceability with confidence. By leveraging blockchain technology, we facilitate secure, immutable data exchange among stakeholders, paving the way for seamless collaboration and unparalleled transparency.

AI

AI service that brings together the knowledge and achievements of the Fujitsu Group's 124000 employees. We provide a wide range of AI capabilities such as generative AI, image recognition, and automated machine learning in a one-stop solution to help customers solve their business problems.

In particular, we have a diverse lineup of generative AI, including "Takane," a Japanese-enhanced LLM for specialized businesses. We provide omnidirectional generative AI services by combining LLM with environments that best meet customer needs, such as cloud environments and private environments.

Professional Services

We provide technology and business consulting services to maximize the value of data and AI.

Supporting you in solving your business challenges through speedy hypothesis verifications.